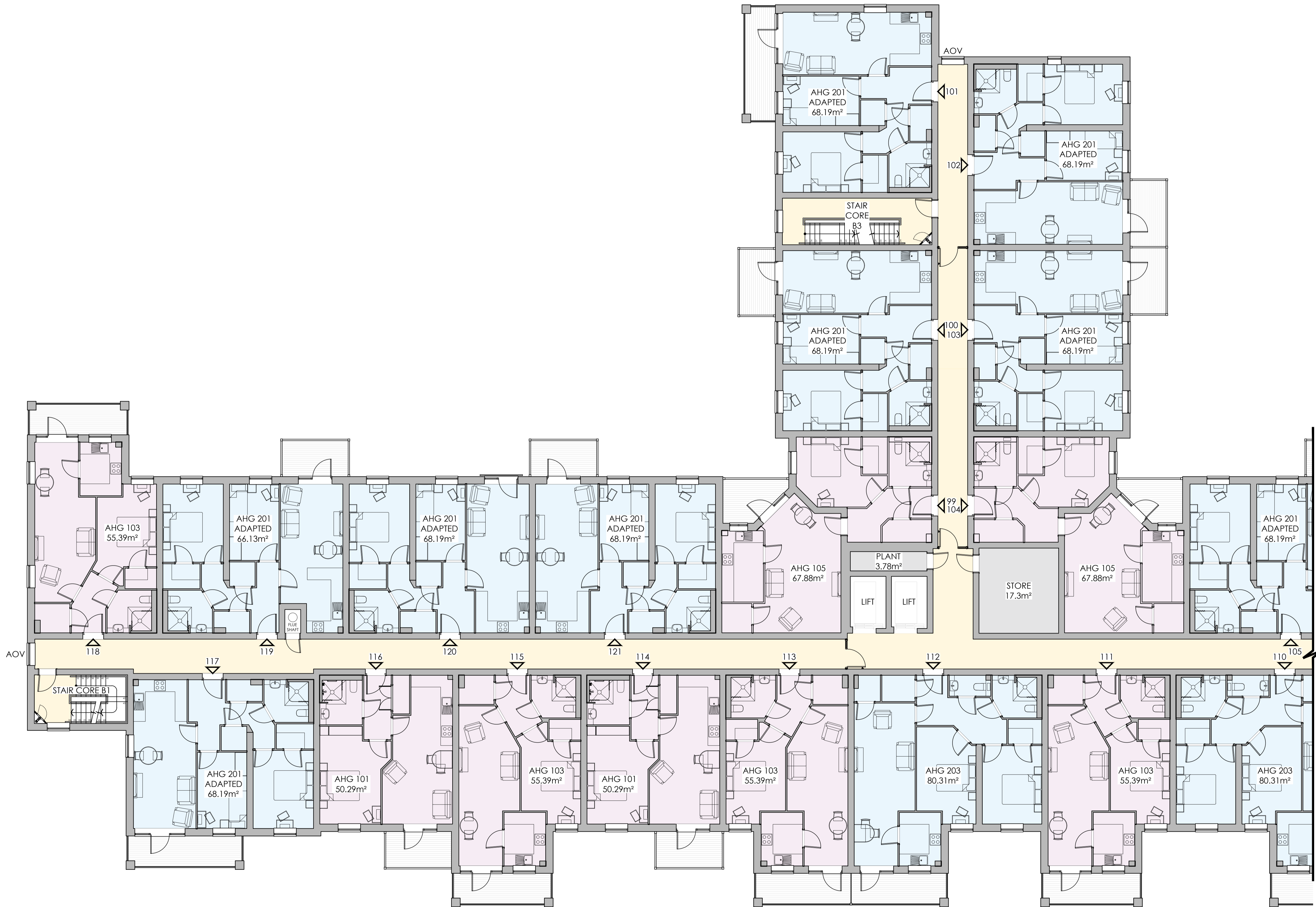
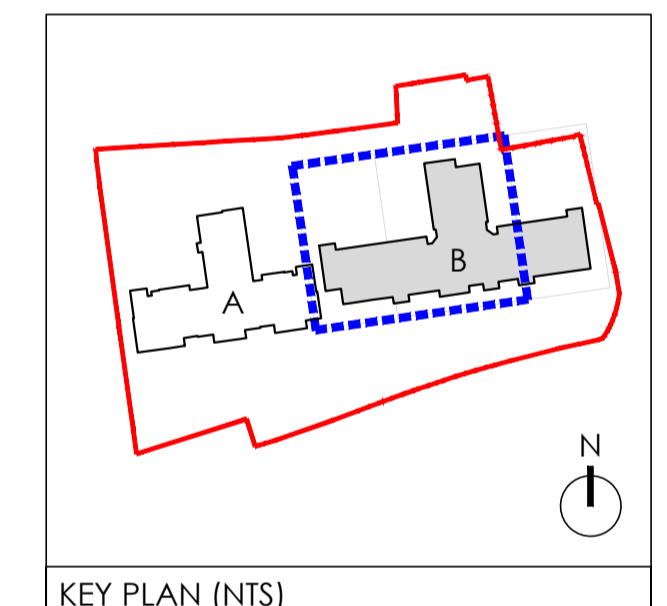


REVISIONS			
Rev.	Note	Date	By
A	Layout updated to planners comments and to suit revised elevations.	10.11.22	SGN
B	Corner unit moved forward	13.12.22	SGN



- KEY**
- 1 Bedroom Apartments
  - 2 Bedroom Apartments
  - Communal Areas
  - Ancillary/Staff Areas
  - Apartment Entrance & Plot Number
  - AOV Automatic Opening Vent



**CHBC Architecture**  
 Essex Barn 24, Little Boyton Hall Farm, Boyton Cross,  
 Chelmsford, CM11 4LN. Telephone 01277 355007  
 Suite 4, Newmarket House, Fordham Rd, Snailwell,  
 Newmarket, CB8 7NB. Telephone 01438 663838

**McCarthy Stone**  
*Life, well lived*

Project Title  
 Retirement Living & Anchor  
 Nazareth House, London Road  
 Southend-on-Sea

Drawing Title  
 Block B (Anchor)  
 Second Floor Plan  
 Sheet 1 of 2

Scale 1:100@A1 Date 23.05.2022  
 Drawn SGN Checked NT  
 Drawing No. **LSE-2794-3-AC-1014 B**

© McCarthy & Stone Retirement Lifestyles Limited  
 All rights reserved. The reproduction of all or any part of this drawing/document and/or  
 construction of any building or part of building or structure to which this drawing/document  
 relates without the written permission of the copyright owner is prohibited.

BLOCK B - SECOND FLOOR PLAN

ALL DIMENSIONS TO BE CHECKED ON SITE. WORK TO FIGURED DIMENSIONS ONLY. REPORT  
 DISCREPANCIES TO THE ARCHITECT AS SOON AS POSSIBLE.